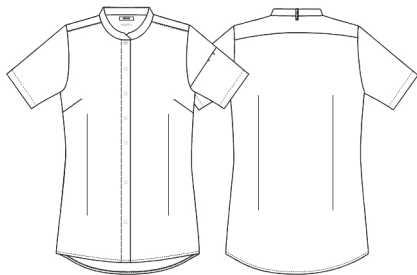


Oxford woman's shirt s/s



- Our Choice
- Modern fit
- Dart on the back
- Collar strap with press button for a bib apron
- Divided pen pocket on left sleeve
- 1 nylon button at the neck
- Hidden press buttons
- Sleeve cut designed to prevent the shirt from lifting during movement
- Added interlining can be washed and dried according to ISO 15797

**Quality:** 60/40% CO/PES, 151 g/m2

**Colour:** Oxford blue 664

**Construction:** Oxford

**Size:** XS-4XL



Washing instructions

Can be washed according to ISO15797. The garments should always be washed before use. Wash before use, by recommended temperature. Colour loss can occur with the use of disinfectants.

To avoid creases the machine should not be filled more than 2/3. Pressbuttons should be open.

Measurement tolerance +/- 1 cm. Expected measurements after approx. 3 times wash. All measurements are in cm.

		XS	S	M	L	XL	2XL	3XL	4XL
Chest	A	92	100	108	116	128	140	152	164
Waist	B	82,5	90,5	98,5	106,5	118,5	130,5	142,5	154,5
Bottom	C	97	105	113	121	133	145	157	169
C.B. length	E	62,5	63,5	64,5	65,5	66,5	67,5	68,5	69,5
Sleeve length	F	23,9	24,5	25,1	25,7	26,3	27	27,7	28,4